



KONICA MINOLTA

bizhub PRO 1052

✍ Outstanding print quality for entry-level production



Giving Shape to Ideas

bizhub PRO 1052 

B/W PRODUCTION PRINTING SYSTEM



DIGITAL PRINTING IS THE WAY TO EFFICIENT GROWTH

The bizhub PRO 1052 incorporates a thoroughly proven and sturdy design, delivering high-performance output, both in terms of volume and quality. As an operator, you profit from a variety of inline finishing options that place advanced Konica Minolta technologies at your fingertips to enhance black and white print quality. It is the bizhub PRO 1052's compelling range of benefits that enables your economic growth from digital printing.

- **Meeting the tightest deadlines** and printing within hours rather than days are your key requirements for digital print production. You must be able to rely on a system that supports these high productivity demands.
- **You need to offer the highest quality for the complete printed product.** Consistency and reliability of your output must be first class at all times. And tools that enable you to easily control and maintain the output quality are of paramount importance.
- **You need to expand your service offerings** and find new ways to attract and keep your customers. At the same time, cost savings and the economic provision of print products are essential for you to remain competitive.
- **The integration of a system that fulfils all these demands** into your existing environment must require little effort, while the highest possible degree of automation should facilitate and streamline your print workflows.

If these are your requirements, don't hesitate to take a closer look at the bizhub PRO 1052. You will most likely find that it can do more for you than you ever thought possible!

HIGH-QUALITY PRINTING PLUS ADDED VERSATILITY

Reliable productivity

You achieve more print jobs in the shop and meet the tightest schedules with ease, helping you grow your business and letting you relax about the future. The key to your success is the bizhub PRO 1052. As your robust production stepping stone to steady profitability, it delivers the kind of dependability in productivity that gives you and your customers ease of mind. With output rated at 105 A4 pages per minute (ppm), and an impressive A3 speed of 60 ppm, this unit delivers maximised performance combined with long-term production security for entry-level digital printing, also thanks to tools like CS Remote Care.

Outstanding print quality

Stand out from the competition in the marketplace and take advantage of new business opportunities with existing customers thanks to amazing quality! Konica Minolta's in-depth technologies provide this even at entry-level to black and white production printing. Simitri® HD polymerised toner, for example, guarantees high-precision output of text and lines, produced using a 1,200 x 1,200 dpi LED print head for reproductive consistency. The Tone Curve Utility tool provides operators with complete control and flexible optimisation of each and every print job. Furthermore, coated and preprinted media can be printed without any problems. It is these great features which work with you to help you deliver the best print output results and form the basis for long-term customer satisfaction.

Flexible finishing

Creating new print applications, providing new service opportunities, plus extreme cost savings for greater profits from higher margins – these are the key aspects you benefit from with the bizhub PRO 1052. Professional paper feeding option e.g. with vacuum feed technology as well as a variety of inline finishing options complement the print quality, which is further enhanced by remarkable media flexibility (such as 300 gsm in duplex printing and optional 350 gsm from the PFU trays). All options are available in a modular design that allows your system to be individually tailored to match your specifications.



Versatile operation

The bizhub PRO 1052 gives you high levels of comfort and convenience, maximising ease of use and helping you to reduce not only labour but also hidden costs with intelligent choices in the implementation of software solutions. A range of interfaces, for example, provides full integration into existing data networks to generate data for detailed cost centre accounting, or integration into a workflow solution for efficient queue management. This unit is equipped with all the functions needed to adapt and respond perfectly to today's demands.



bizhub PRO 1052 TECHNOLOGY

The bizhub PRO 1052 delivers success in print thanks to a wide choice of unique proprietary technologies which together ensure high-definition images as the basis for top-quality printouts. The image quality is truly consistent from the very first to the very last page, and from print job to print job. It is the ultimate guarantee of professional results that are able to impress even the most demanding customers.

1,200 x 1,200 dpi LED print head

The bizhub PRO 1052 achieves two-way 1,200 dpi print resolution thanks to the inclusion of a state-of-the-art LED print head (LPH). This technology improves the reproduction of even small fonts, while the high number of screen raster lines effectively smoothes the reproduction of half tones.



Simitri® HD toner

Simitri® HD toner is a Konica Minolta in-house development which uses polymerised processing techniques to produce smaller, more consistently shaped particles to raise printing resolution. This polymerised toner also has a lower fixing temperature and helps reduce paper curl. And because fixing is oil-free, the result is a natural-looking gloss with reduced glare, producing an output of a quality that rivals even that of offset printers. The toner material recipe contains around 10% biomass, helping to reduce the environmental impact.

Belt transfer system

The bizhub PRO 1052 is equipped with a state-of-the-art belt transfer system designed from scratch to improve paper feeding as well as the quality of the transferred images. The full-area adherence of the paper to the belt eliminates any gaps and ensures that the toner is applied to the paper consistently and absolutely evenly.

User-defined screens for setting and Tone Curve Utility

The introduction of predefined setting masks (two types with three patterns each) plus a choice of dot screen settings allow users to select the best screen for each specific print job. The print station also comes with a standard controller plus the proprietary Tone Curve Utility tool to help you adjust and correct print data to better match customer specifications. These techniques allow for adjustment of image brightness and contrast over a wide range, without affecting text, to still deliver 100% density. The system allows individual customer settings to be stored and recalled as and when needed.

For jobs that involve the reproduction of colour documents in black and white, the CIE colour space allows the operator to achieve highly accurate colour conversion by precise grey-scale calibration and controlled collapse of shadowed areas.

Schedule management

The schedule management application implemented in the bizhub PRO 1052 gives operators an overview of the information needed to best handle all queued print jobs. The display includes all current jobs plus helpful detailed information including the kind of paper in use, and displays a timeline to indicate capacities. The operator can access updated and detailed overviews of suspended and reserved jobs.

Multi-sheet detection sensor

The paper feed unit supplying the central print engine is fitted with a multi-feed paper detection sensor that prevents blank sheets getting mixed in with the printed output. The sensors use ultrasound technology to monitor paper feeding from all trays; if a blank sheet is detected, printing is automatically suspended to prevent misprints and wastage of high-quality paper.

Paper skew detection sensor

The sensor installed to prevent paper skew measures the skew angle based on the time gap and the linear velocity of paper during transfer, and automatically stops printing as soon as the paper skew detected exceeds a preset limit. This pre-empts printing errors and shuts the door on post-processing problems before they even happen.

bizhub PRO 1052

BUSINESS OPPORTUNITIES

The production print market is undergoing significant changes today. Accelerated by the recent economic downturn, the number of printing businesses is in decline, total print volume is decreasing and an increasing number of print applications are being transferred to electronic media.

Informed printing companies know that they need to grow their print business, increase profit margins and generate new revenues. To support customers in achieving this, Konica Minolta Business Solutions Europe has launched Digital1234; a comprehensive business development program that puts the focus upon the customer's needs to enable his business.

The key question is 'How can we enable your business today?' The solution to most business challenges can simply be answered with "by saving you money, increasing your profit, adding new services and making you more productive." The Digital1234 business building program has been designed for simplicity and encourages businesses to take an opportunity-based approach – to start driving a better business. Using four practical steps the customer is guided and coached on how to identify, assess, justify and implement new business opportunities.

The basic concept features these four steps, giving advice through the business process: Why should I invest in this opportunity? How can I fit this into my existing business? Who has experienced it and can tell me about it? What steps should I take to be successful with this new opportunity?

Starting with "why", Digital1234 uses simple opportunity-based papers written by credible industry partners, who explore each business opportunity. The second step focuses upon the "how", by using simple assessment questions set by a panel of international and independent business experts. The third step, the "who", describes the story behind the business success while the fourth step provides business resources for download to help customers prosper in their business, such as business focused implementation guides written by industry consultants.

1234

DIGITAL1234
enabling your business

Digital1234

The Digital1234 business development program is designed to encourage print businesses to focus on the opportunities to save money, increase profits, add new services and to improve productivity.

Using four practical steps the customer is guided and coached on how to identify, assess, justify and implement new business opportunities.

Web to print

- In the past all print jobs were submitted and processed manually.
- With the rise of Internet usage, most printer businesses have recognised the value to offer customers a web portal where they can submit their print jobs.
- Web submission includes: uploading the print data, getting a price quote, getting a proof, tracking information on the status of the print job, automatic link to payment and administration, etc.
- Web to print enables your company to be online 24/7, to automate the print job submission process, improve efficiency, eliminate manual elements in the job submission process.



Variable data printing

- What is most unique about digital printing?
 - You can customise every page within one print run and thus create a unique, targeted and relevant message for each recipient.
 - This is called “Variable Data Printing” (or VDP).
- Direct mail can be more personal:
 - “Dear Sir or Madam” will become “Dear Paul”.
- This is the unique value proposition with digital printing that cannot be achieved with traditional printing.
- Studies have shown: the more you zoom in on your readers, the more effective your message will be.
- On average personalised marketing collateral leads to 31% greater profits compared to general marketing materials.
- As a print provider you can charge more for VDP jobs, and your customer gets a better response per piece.
- More profit for you – more business for your customer.



bizhub PRO 1052

ENTRY-LEVEL UNIT WITH TOP-LEVEL PRODUCTIVITY

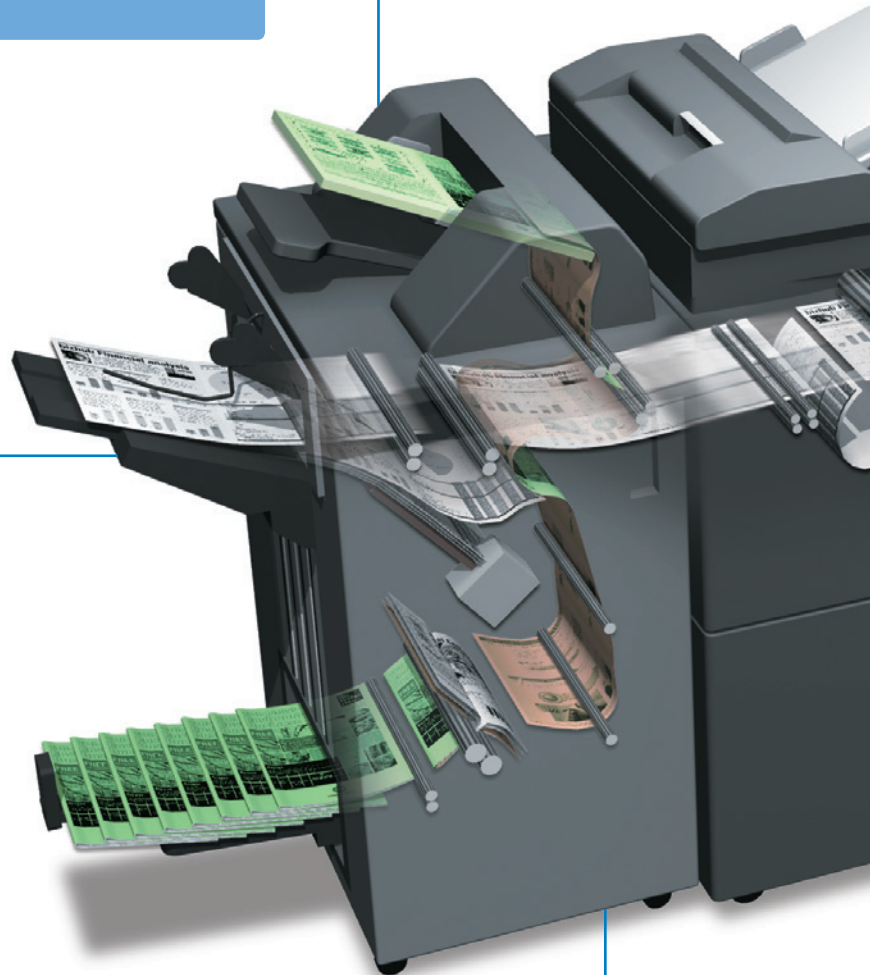


POST INSERTION

- Optional post insertion with two trays and up to 400 sheets input capacity

PAPER OUTPUT CAPACITY

- Up to 4,200 sheets
- Separate sub tray
- Separate tray for booklets



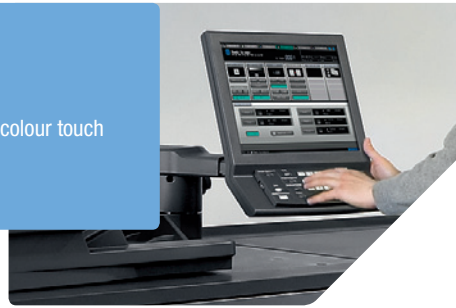
VARIOUS FINISHING OPTIONS

- Optional booklet finisher for booklets of up to 20 sheets (80 pages); staple finisher with staple-cutting mechanism and stapling of up to 100 sheets
- Optional punch kit for 2- and 4-hole punching available



TOUCH PANEL

- Very easy to use, full-colour touch screen, movable



POWERFUL CONTROLLER

- High-speed RIP integrated for exceptional productivity

CHOICE OF PAPER UNITS

- PF-703: 3-tray paper feed unit with vacuum feeding and optional dehumidifying heater
- PF-706: 3-tray paper feed unit with friction feed and optional preprinted paper feed kit

BLACK & WHITE PRINTER

- Up to 105 ppm A4/60 ppm A3
- Peak volume of 2 million prints
- 1,200 x 1,200 dpi print resolution
- Duplex up to 300 gsm, simplex up to 350 gsm

TECHNOLOGY

- Simitri® HD polymerised toner
- Enhanced Dmax settings
- Green technologies for high eco-consciousness





The bizhub PRO 1052 stands out because of its truly outstanding RIP and print performance, delivering the kind of capabilities which help commercial printers and print providers keep up with continuous production demands and satisfy customer specifications. The controller is fitted out with the very latest Intel platform and integrated into the main body.

▀ Optimised job processing

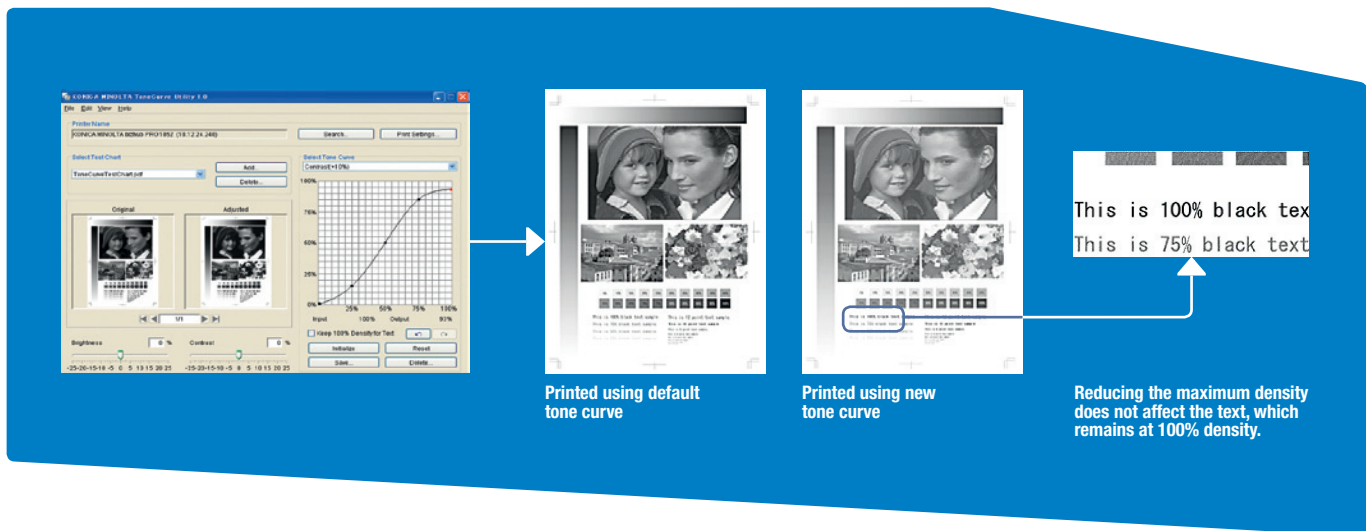
Featuring the kind of RIP speed previously unavailable in this class, the bizhub PRO 1052 easily handles even the most comprehensive of jobs, and features JDF-JMF compliance to ensure full and easy integration into any working environment. This is optimised job processing at its very best, boasting the kind of capacities needed to produce high volumes in minimum time. Featuring outstanding CIE functionality, the controller enhances the reproduction of colour-based documents wherever necessary. RGB colour data is transposed into the CIE colour space to produce much finer grey scaling with high degrees of differentiation, far exceeding what is achievable when printing colour data without transformation.

bizhub PRO 1052 CONTROLLER

Tone Curve Utility

Konica Minolta's unique Tone Curve Utility places a tool at your fingertips to help make intelligent RIP adjustments, such as screening and tone curves, along with the ability to customise the screening angle and dot shape. Operators have the choice of a variety of predefined tone curves and can quickly and simply create individual

curves using a straightforward drag&drop functionality, e.g. setting customised profiles such as the controller default or storing them on the RIP ready for instant recall in the printer driver. It is this level of comprehensive functionality which means operators have complete and flexible control over print quality optimisation.



The image shows the Tone Curve Utility software interface on the left, which includes a 'Default Tone Curve' graph with input and output density scales. An arrow points from the graph to two printed output examples. The first example, labeled 'Printed using default tone curve', shows a printed page with a dark, high-contrast image. The second example, labeled 'Printed using new tone curve', shows the same page but with a lighter, more balanced image. A callout box points to the text on the second page, stating: 'Reducing the maximum density does not affect the text, which remains at 100% density.' The text in the callout box reads: 'This is 100% black text' and 'This is 75% black text'.

EFI Fiery Central Solo

- The EFI Fiery® Central Solo enables printer operation and control via the popular and successful Fiery Command Workstation.
- It unifies the operational environment by managing multiple printers with one single intuitive interface.
- The optional Fiery Impose-JobMaster bundle is the perfect assistant to help you professionally impose and perform complex document composition including importing scans, tab creation and page editing and numbering during job preparation.
- The benefits of the multi Fiery driven engine environment include:
 - Administration transparency across the entire printing fleet: all printers can be controlled from one interface.
 - Up to three engines can be connected and grouped for use in workflows (e.g. Color Split, Volume Balancing, automatic rerouting on job error, etc.).

Paper catalogue

The paper catalogue is another feature of the bizhub PRO 1052 that complements the device's other outstanding capabilities to maximise operational speed and efficiency. After programming the paper catalogue just once, the operator no longer needs to think about whether the paper type required for a specific job is stored. When preparing production, the operator simply selects the desired type of media from the paper catalogue. The functionality includes the option of allocating individual names to different types of paper, like "Corporate Blue". This is a way of speeding up recognition and raises the benchmark of user convenience even higher.





HIGH VARIETY FROM A TO Z

There is no such thing as a simple production run. Every production job bears the expectation of professional handling of the printed product during all stages of the production processes, from the printing itself to sophisticated finishing – and as always, flexibility is the key!

Paper feed unit PF-703

The large-capacity paper feed unit PF-703 extends the paper capacity by three paper trays holding up to 5,000 sheets and enables the processing of media between 40 and 350 gsm. All paper sizes can be fed from all trays. The PF-703 incorporates vacuum feed technology for continuous large capacity feeding even for imprints on pre-printed media. The optional dehumidifying heater can optimise the paper feeding on offset and coated stock and in high humidity zones.



Two-sided printing/
duplex



One-sided printing



Mixmedia white/colour sheets from different trays



Mixplex one-/two-sided during operation



Combined mixplex/mixmedia



Colour sheet insertion



Paper feed unit PF-706

The large capacity paper feed unit PF-706 extends the paper capacity by adding three paper trays with capacities of up to 9,000 sheets and extends the media flexibility to between 40 and 350 gsm. Added flexibility as it is possible to feed all paper sizes from all trays. The optional pre-printed paper feed kit enhances the take-up performance and improves the existing air flow separation on preprinted stock.



Two-sided printing/
duplex



One-sided printing



Mixmedia white/colour sheets from different trays



Mixplex one-/two-sided during operation



Combined mixplex/mixmedia



Stapling unit FS-532

Equipping a bizhub production printing system with the FS-532 stapling unit gives print providers a multi-position stapling system with the capability to produce manuals, reports and other extensive documentation with ease and dependability. This unit can staple up to 100 sheets at a speed that is able to match the production capacity, and cuts the one-fits-all staple to size during processing. Auto-shift sorting and grouping is also available; this unit gives an output capacity of up to 4,200 sheets. The FS-532 can be upgraded with optional punching and post insertion.



Corner stapling



Two-point stapling



Two-hole punching



Four-hole punching



Colour cover insertion



Colour sheet insertion



Auto-shift sorting



Variable staple length



All-in-one finisher FS-532 & SD-510

The combination of the FS-532 with the SD-510 means the staple finisher is now able to make booklets. The fully automated booklet making capacity is up to 20 sheets (80 pages) per booklet, has two folding functions, centre fold and letter fold, with further options available, including punching and post insertion of printed sheets.



Corner stapling



Two-point stapling



Two-hole punching



Four-hole punching



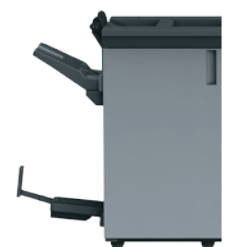
Booklet



Colour sheet insertion



Letter fold





ALL-ROUND AVAILABILITY

Professional printers simply need dependable hardware and highly reliable printing technology. Which is why reliability was a top priority in the development of the bizhub production printing systems. Its quality of workmanship and robust metal construction guarantee absolutely sound and secure operation. Various tools and system features enhance the all-round usability further:

▀ Toner and paper refill on the fly

Toner and paper refill on the fly largely avoid production interruptions.

▀ Customer Maintenance Support

In addition, Konica Minolta's Customer Maintenance Support (CMS) concept permits the fast and simple exchange of certain system components and working parts by the operator. Print providers welcome being able to solve such minor system problems instantly in-house as this further enhances their flexibility.

▀ CS Remote Care

Via CS Remote Care, Konica Minolta's remote service tool for counter readings, system errors and maintenance requirements of bizhub PRESS and PRO systems can be automatically transmitted to the Konica Minolta service.

This enables early analysis of the system status and preventive maintenance if required, before concrete problems occur. It also helps minimise system downtimes and administrative efforts on user side, saving print providers time and money, helping them keep their sanity, and offering them the benefits of virtually all-round system availability and maximised productivity.



CS Remote Care

PRINTER SPECIFICATIONS

Print speed A4	Up to 105 ppm
Print speed A3	Up to 60 ppm
Print resolution	1,200 x 1,200 dpi
Gradations	Up to 256 levels

SYSTEM SPECIFICATIONS

Paper weight	Standard: 40–350 gsm In duplex mode: 50–300 gsm
Duplex unit	Non-stacking type
Paper sizes	A5 to A3+ (SRA3); min. 95 x 139 mm; max. 324 x 483 mm (with PF-703)
Maximum image area	314 x 483 mm (with PF-703)
Maximum paper input capacity	Max.: 9,000 sheets; main unit: up to 3,000 sheets; PF-706: up to 6,000 sheets; PF-703: up to 5,000 sheets
Maximum paper output capacity	Large capacity tray: 4,200; per sub tray: 200 sheets
Warm-up time	Less than 420 sec.
Main unit dimensions (W x D x H)	990 x 780 (910 w. controller) x 1,233 (1,464 w. panel) mm
Main unit weight	Main unit: 375 kg

CONTROLLER SPECIFICATIONS

Hardware	Embedded controller
CPU	Pentium G6950 2.8 GHz
RAM	2 GB
HDD	250 GB or above
Page description languages	PCL 5e/XL (PCL 6); Adobe PS 3; TIFF; PDF

SCANNER SPECIFICATIONS

Scan speed A4	Up to 105 opm
Scan speed A3	Up to 60 opm
Scan resolution	1,200 dpi; 600 dpi; 400 dpi; 300 dpi; 200 dpi
Scan modes	TWAIN scan; Scan-to-HDD; Scan-to-FTP; Scan-to-SMB; Scan-to-email
Scan formats	PDF; TIFF; secured PDF; XPS

- All specifications refer to A4-size paper of 80 gsm quality.
- The support and availability of the listed specifications and functionalities varies depending on operating systems, applications and network protocols as well as network and system configurations.
- The stated life expectancy of each consumable is based on specific operating conditions such as page coverage for a particular page size (5% coverage of A4). The actual life of each consumable will vary depending on use and other printing variables including page coverage, page size, media type, continuous or intermittent printing, ambient temperature and humidity.
- Some of the product illustrations contain optional accessories.
- Specifications and accessories are based on the information available at the time of printing and are subject to change without notice.
- Konica Minolta does not warrant that any prices or specifications mentioned will be error-free.
- All brand and product names may be registered trademarks or trademarks of their respective holders and are hereby acknowledged.

COPIER SPECIFICATIONS

Copy speed A4	Up to 105 cpm
Copy speed A3	Up to 60 cpm
Copy resolution	600 x 600 dpi
Gradations	256 gradations
FCOT	Less than 2.8 sec. (A4 LEF)
Magnification	25–400% in 0.1% steps
Multiple copies	1–9,999

ACCESSORIES

Automatic document feeder	Max.: 100 sheets
Paper feed unit	<p>Paper feed unit PF-706 3 magazines; paper capacity: up to 6,000 sheets; paper weight: 40–350 gsm; standard paper sizes: A5 to A3+ (SRA3); min. paper size: 95 x 139 mm; max. paper size: 324 x 463 mm</p> <p>Paper feed unit PF-703 3 magazines with air-suction technology; paper capacity: up to 5,000 sheets; paper weight: 40–350 gsm; standard paper sizes: A5 to A3+; min. paper size: 95 x 139 mm; max. paper size: 324 x 483 mm</p>
Staple finisher	<p>Stapling unit FS-532 Stapling of up to 100 sheets; two-point and corner stapling; variable staple length (cutting mechanism); output for up to 4,200 sheets (A4); sub tray for up to 200 sheets; auto-shift sorting and grouping</p>
Booklet finisher	<p>Saddle stitching kit SD-510 (for FS-532) Booklet making of up to 20 sheets (80 images); saddle stitching; cover sheets from 50 to 300 gsm; output tray for booklets; multi-letter fold-in (up to 3 sheets); multi-half fold (up to 5 sheets)</p>
Punch kit	<p>Punch kit PK-522 (for FS-532) Punching (2 and 4 holes selectable)</p>
Post inserter	<p>Post insertion unit PI-502 (for FS-532) Insertion of preprinted sheets; PI trays for 200 sheets each</p>



Your Konica Minolta Business Solutions Partner:

Simitri HD
High Definition Polymerised Toner

Simitri
with Biomass

